

Rodborough Common



Pasqueflower

How to mark a Lark

Sskylarks are most easily spotted when they are singing, so listen carefully when you are out for your walks. Do not attempt to walk to where the lark is singing as you may inadvertently damage a nest. If you spot a lark, estimate how far away from the path it is, and mark it with an 'X' in the appropriate square. Only mark each bird once.

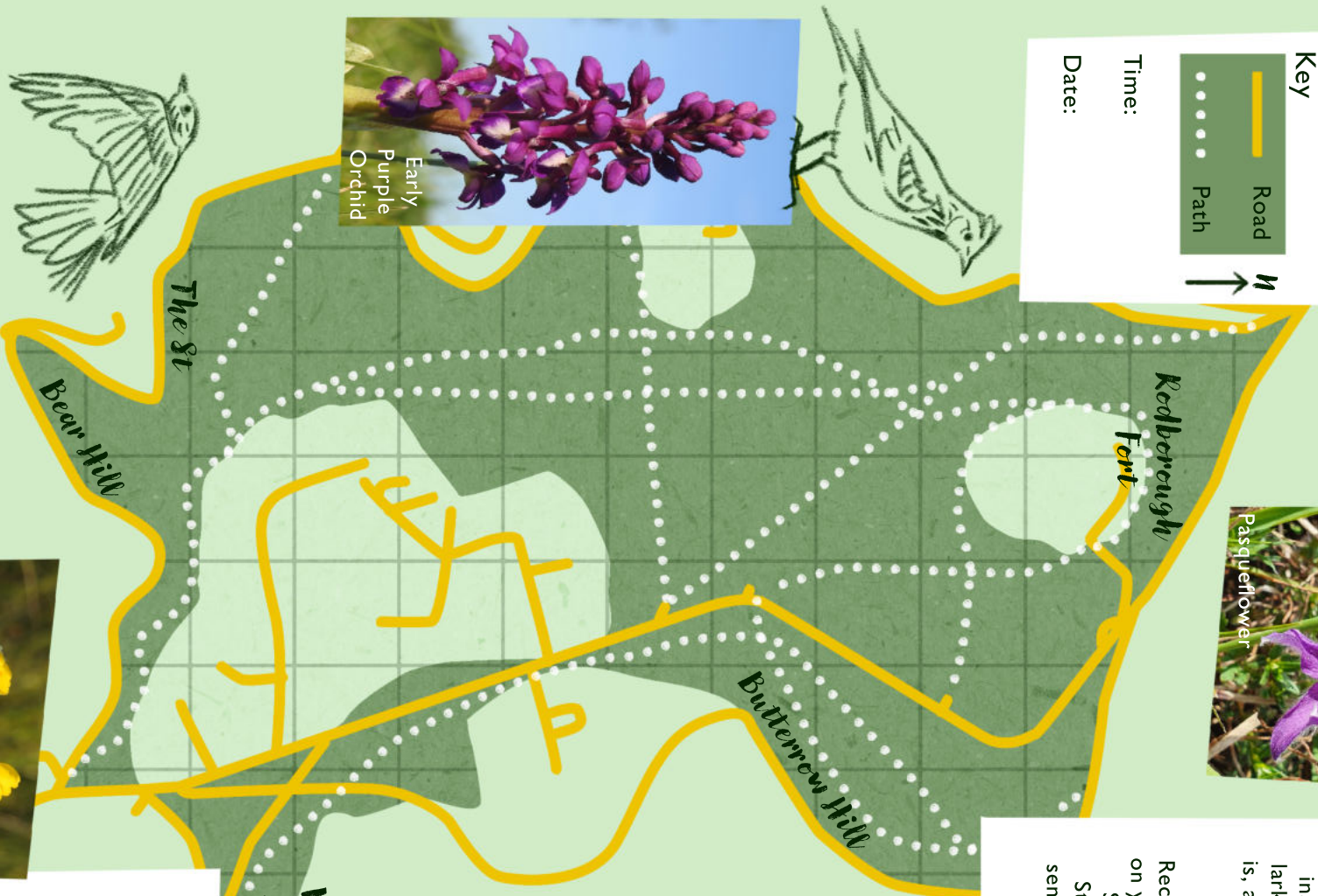
Record the time range and date of your walk on your leaflet. Drop your leaflet back to the SVP eco shop on Threadneedle Street, Stroud, take a picture of your leaflet and send it to info@stroudvalleysproject.org, or tag us on social media.

Key

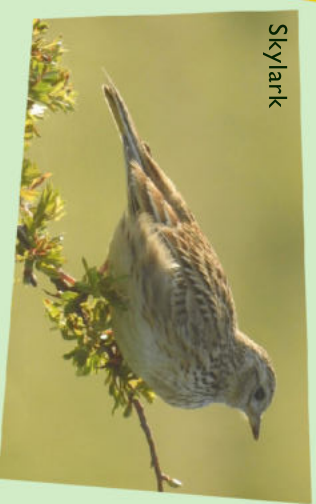
-  Road
-  Path

Time:

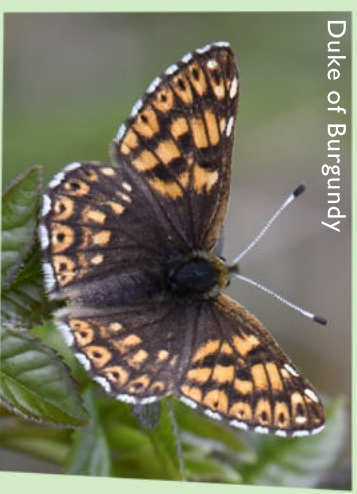
Date:



Early Purple Orchid



Sskylark



Duke of Burgundy

Winstone's Ice Cream



What else lives here?

Rodborough Common is a European Special Area of Conservation, a Site of Special Scientific Interest (SSSI), and a Regionally Important Geological Site, due to its rare ecology and special geology.

More than 100 different species of grasses and wildflowers have been recorded here, including Quaking Grass, Crested Dog's-tail, rare Pasqueflowers and orchids, including Frog and Bee orchids.

As a result of its great grassland it also has lots of invertebrates, including Chalkhill Blues, Duke of Burgundy and Large Blue butterflies.



Cow



Cowslip